

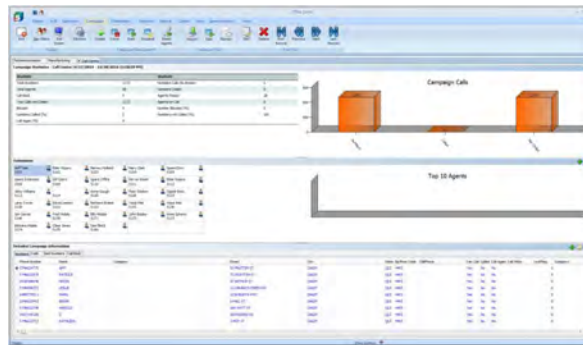
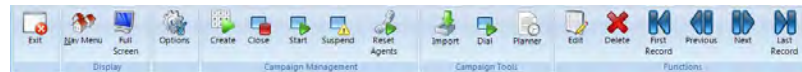
## Office Campaign

### BENEFITS

- Manage Your Outbound Dialling
- Measure Outbound Marketing Success
- Measure Agent Skill Efficiency
- Analyse Area Markets
- Costs Forecasting
- Utility Forecasting
- Time Forecasting
- Agent Forecasting
- Automated Dialling



Office Campaign provides you with a structured means of outbound dialling enabling you to gather accurate data relating to each individual Sales campaign. The Campaign manager is suitable for anyone looking to keep an accurate record of the outcomes, events, appointments, bad numbers etc... without the hassle of paper work. A friendly screen pop provides you with information about who you are calling, categories to define the calls as well as outcomes and call backs which can be reported on at a later date. As your database grows over time Office Campaign will provide you with the key information that will enable you to make an accurate and cost effective decision to boost sales each and every quarter.



### FEATURES

- Automatic or Manual Dialling
- Easy to Use Outcome form per Call
- Detailed Marketing Analysis
- Sales Performance Reporting
- Agent Handling Reports
- Call Centre Performance
- Historical Data for Future Campaign
- Campaign Forecasting Toll
- Call back Reminder
- Outcome Reports

## TURNKEY SOLUTIONS

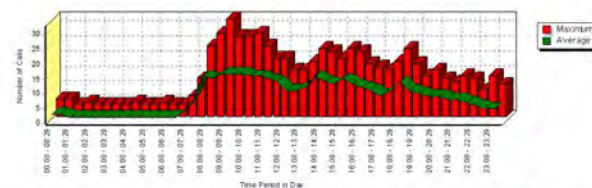
All of our turnkey units require minimal support, reduced maintenance and offer increased stability providing you with a reliable and robust platform that will continue to service your business.

For more information on any of our products or services please visit us at [www.commssoft-rms.com](http://www.commssoft-rms.com) or speak to your local phone dealer

### SERVICES AVAILABLE

- Technical Support
- Installation and Setup
- Maintenance
- Application Support
- Hardware Support
- Guaranteed Warranty

Trunk Usage Over Time By Day  
For the Day: 16/04/2014  
Report Criteria



Period	Maximum Calls	Average Calls	Total Duration
06:00 - 06:29	4	2	00:06:25
06:30 - 06:59	4	2	00:03:42
07:00 - 07:29	7	4	00:12:42
07:30 - 07:59	13	8	00:11:16
08:00 - 08:29	24	16	00:37:33
08:30 - 08:59	28	15	00:44:33
09:00 - 09:29	33	17	00:41:49
09:30 - 09:59	27	17	00:52:50
10:00 - 10:29	27	17	00:30:32
10:30 - 10:59	28	16	00:11:43
11:00 - 11:29	24	16	01:09:27
11:30 - 11:59	20	15	00:58:35
12:00 - 12:29	20	14	00:19:14